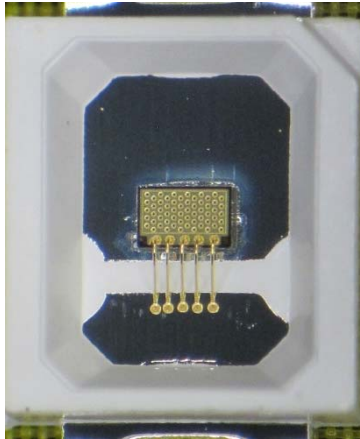


850nm Power Array VCSEL with power emission 1W to 1.6W pulsed in a PLCC 2835 package



850PA on a PLCC 2835 package

Near Infra-Red Vertical Cavity Surface Emitting Laser (VCSEL)

Model: 850nm Multi Mode Array VCSEL

Applications

- Automotive Sensing
- 3D Scanning
- Motion Control
- Time of Flight
- Gesture Recognition
- IR illumination for Security

Package Details: This VCSEL array is delivered in a PLCC 2835 package (shipped in tape on reel for minimum quantities of 2000 pcs) with an encapsulant. The PLCC package is compatible with standard SMT solder reflow processing.



COMPLIES WITH IEC 60825-1, 2nd Edition 2007.
COMPLIES WITH 21 CFR 1040.10 AND 1040-10.11 EXCEPT FOR DEVIATIONS PURSUANT TO LASER
NOTICE NO.50 DATED 27 MAY 2001.



Absolute Maximum Ratings

Parameter	Rating	Notes
Storage temperature	-40 to 100 °C	
Operating temperature (VCSEL)	-20 to 80 °C	
Maximum package SMT solder reflow temperature	260°C, 10 seconds	
Maximum pulsed current	2.4 A	100µs pulse width, 10% duty cycle, T=25°C (Note 2)

Note 1: The maximum CW laser current in the Absolute Maximum Ratings is valid for the operating temperature noted at the table above. The maximum CW laser current decreases with increasing temperature. Contact Vixar for maximum CW laser current values at other temperatures.

Note 2: For details refer to the Vixar Application Note "Operation of VCSELs Under Pulsed Conditions". (<http://www.vixarinc.com/technology/applicationnotes.html>)

Stresses beyond those listed under Absolute Maximum Ratings may cause permanent damage to the device. These are stress ratings only. Functional operation of the device at these or any other conditions beyond those indicated for extended periods of time may affect device reliability.

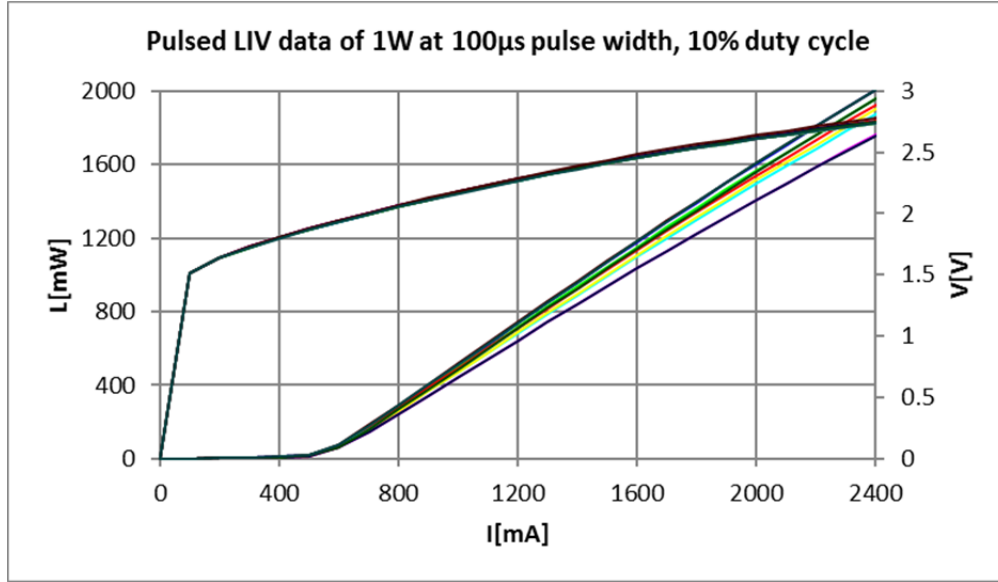
Electro-Optical Characteristics

VCSEL Operating Temp (Tv) =25°C, Pulsed at 100µs pulse width & 10% duty cycle unless otherwise noted

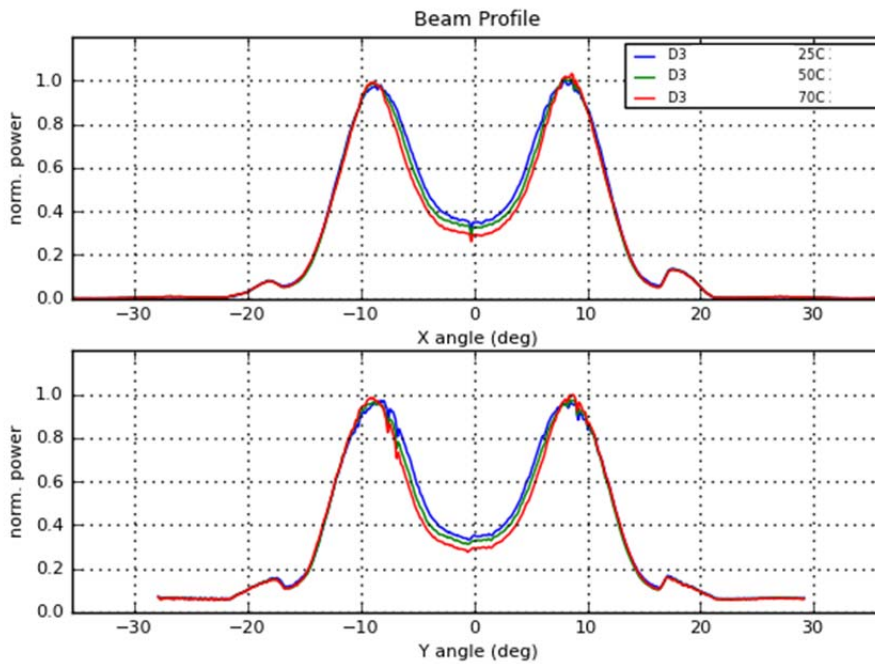
Product ID			Minimum	Typical	Maximum	Notes
Parameter	Symbol	Units				
Threshold current	I _{th}	mA	300	400	550	
Operating voltage	V _f	Volts	2.0	2.5	3.0	at 1.6A
Optical Operating power	L _{op}	mW	800	1000	--	at 1.6A
Slope efficiency	SE	W/A	--	0.85	--	at 1.6A
Power conversion efficiency	PCE	%	35	--	--	at 1.6A
Reverse breakdown voltage		V	10	--	--	I _r ≤ 1nA
Beam divergence	FWHM	deg	20	24	27	
Operating wavelength	λ _{op}	nm	840	850	860	
Rise time		ps	--	--	500	20%-80%
Fall time		ps	--	--	500	20%-80%

TYPICAL PERFORMANCE CURVES AT 25°C:

Sampled pulse data



Beam divergence data over temperature (25°C, 50°C, 70°C)



**ORDERING INFORMATION**

Description	Package	Part Number
1 Watt 850 nm Power array VCSEL on a PLCC package with encapsulant	PLCC 2835	I0-0850M-0000-KP04
1 Watt 850 nm Power array VCSEL bare die		I0-0850M-0000-AP04



2950 Xenium Lane, Suite 104
Plymouth, MN 55441
763-746-8045
email: info@vixarinc.com
website: www.vixarinc.com
Copyright ©VIXAR